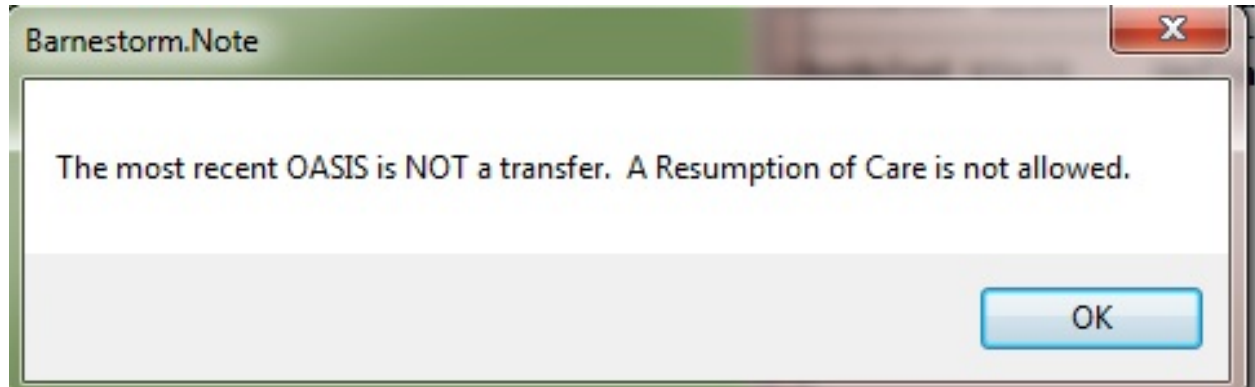


I Can't Select Resumption of Care As My Assessment Type



If you receive this popup when trying to start a ROC assessment, try the following troubleshooting steps:

1. Check **OASIS History**. Make sure there is a ROC for every past Transfer
2. Verify the **M0090 date** is correct on the Transfer OASIS.
3. Verify the **Sequence date** is correct on the Transfer OASIS. The sequence date pulls from the M0906.

Knowledgebase

<http://kb.barnestorm.biz/KnowledgebaseArticle51086.aspx>